



Institutionalizing HIA Kor

Jinhee Kim, MPH

PhD Candidate,

Seoul National University School of Public

Area at a Glance

Location : East Asia

Area : 100,000km²

Climate : 4 seasons

Population : 49.5 million (2009)

Population Density : 485/km² (Seoul 16,221/km²)

GNI per capita : 23,000USD (2008)

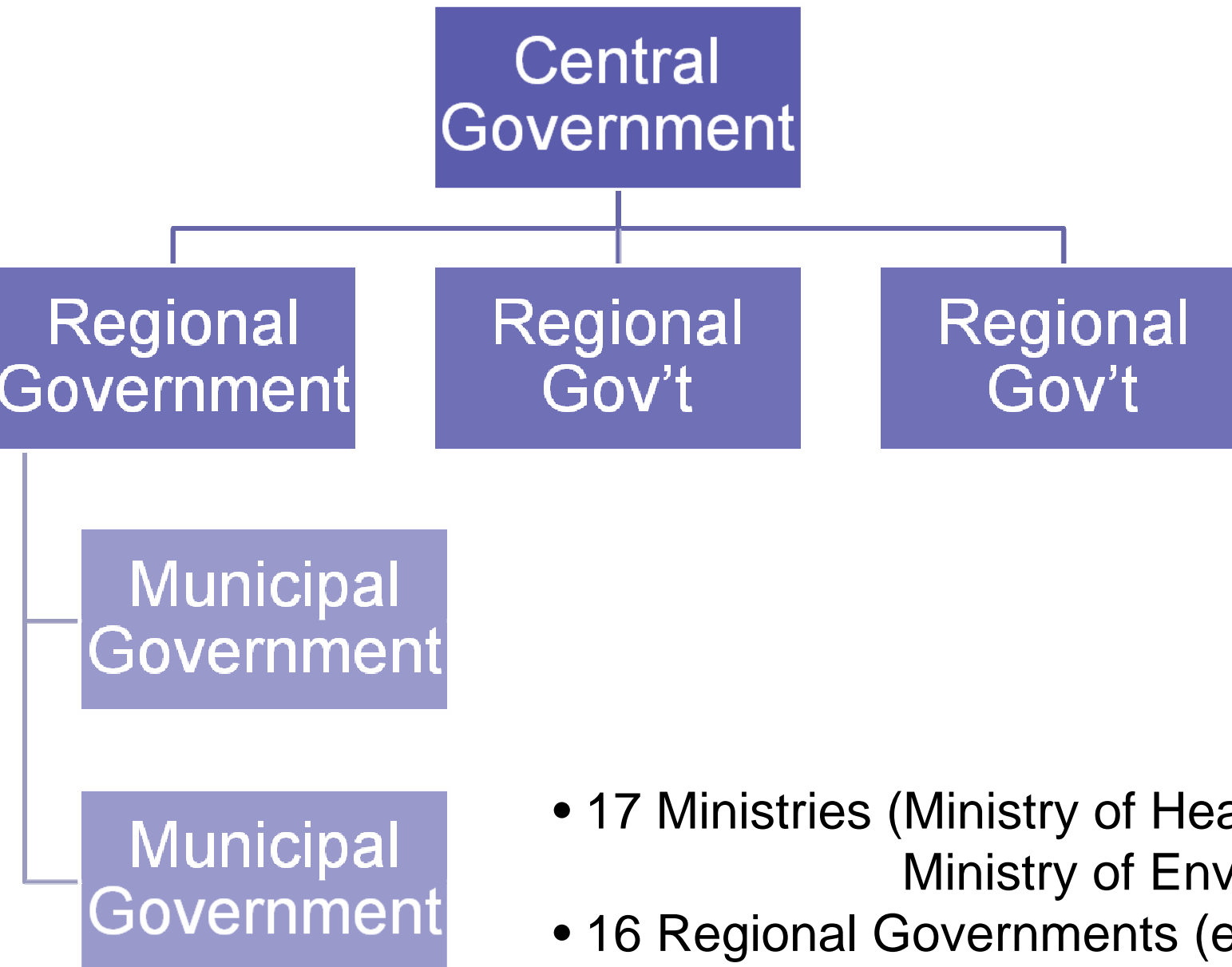
Life expectancy : 79.1 (M78.1/F80.1)

Total fertility rate : 1.20

Over 65 Population : 9.2%



Korea at a Glance : Administrative Structure



- 17 Ministries (Ministry of Health, Welfare and Family Affairs, Ministry of Environment, etc)
- 16 Regional Governments (ex. Seoul Metropolitan City)
- 250 Municipal Governments (ex. Gangnam)

Environmental Health Act (March 2008)

Include Health Impact Assessment in EIA (2010)

Evaluate harmful effects of environmental factors on human health

Ministry of Health, Welfare and Family Affairs (MHWFA)

Commissioned study for institutionalization of HIA in Korea.

Research Team

Korea Institute for Health and Social Affairs (KIHASA)

Seoul National University School of Public Health

Sooncheonhyang University Center for Health Impact Assessment

Healthy Cities Research

What is Institutionalization?

Systematic integration of HIA into the decision-making process
HIA would have to become part of the rules and procedures normally followed by the different decision-making bodies involved in order to realize its potential to catalyze inter-sectoral action for health” (Banke 2003)

1. Stewardship (Governance)
2. Funding
3. Capacity Building
4. Delivery

Prerequisites for institutionalization : methodological standardization

Impact Assessments in Korea

	Environment	Population	Transport	Disaster	Gender
Year	1981	1984	1987	1996	2001
Agency	Ministry of Environment	Ministry of Land, Transport and Maritime Affairs	Ministry of Land, Transport and Maritime Affairs	Ministry of Public Administration and Security	Ministry of Gender Equality and Family
Key Legislation	Environment Impact Assessment Act	Seoul Metropolitan Area Readjustment Development Act	Urban Traffic Improvement Act		Framework Act on Gender Equality
Consolidated Legislation	Act on Impact Assessment of Works in Environment, Traffic, Disaster, etc (2001-2007)				
Projects					
Number of Plans	14 Development Plans	4 Development Plans	10 Development Plans	4 Development Plans 1 Facilities	Public Information

Gender(Equality) Impact Assessment

Tool for identifying the potential impacts on gender and equality of policies, services and functions on the community.

Conducted by public agencies and local governments under the supervision of the Ministry of Gender Equality.

Recently Institutionalized in Korea

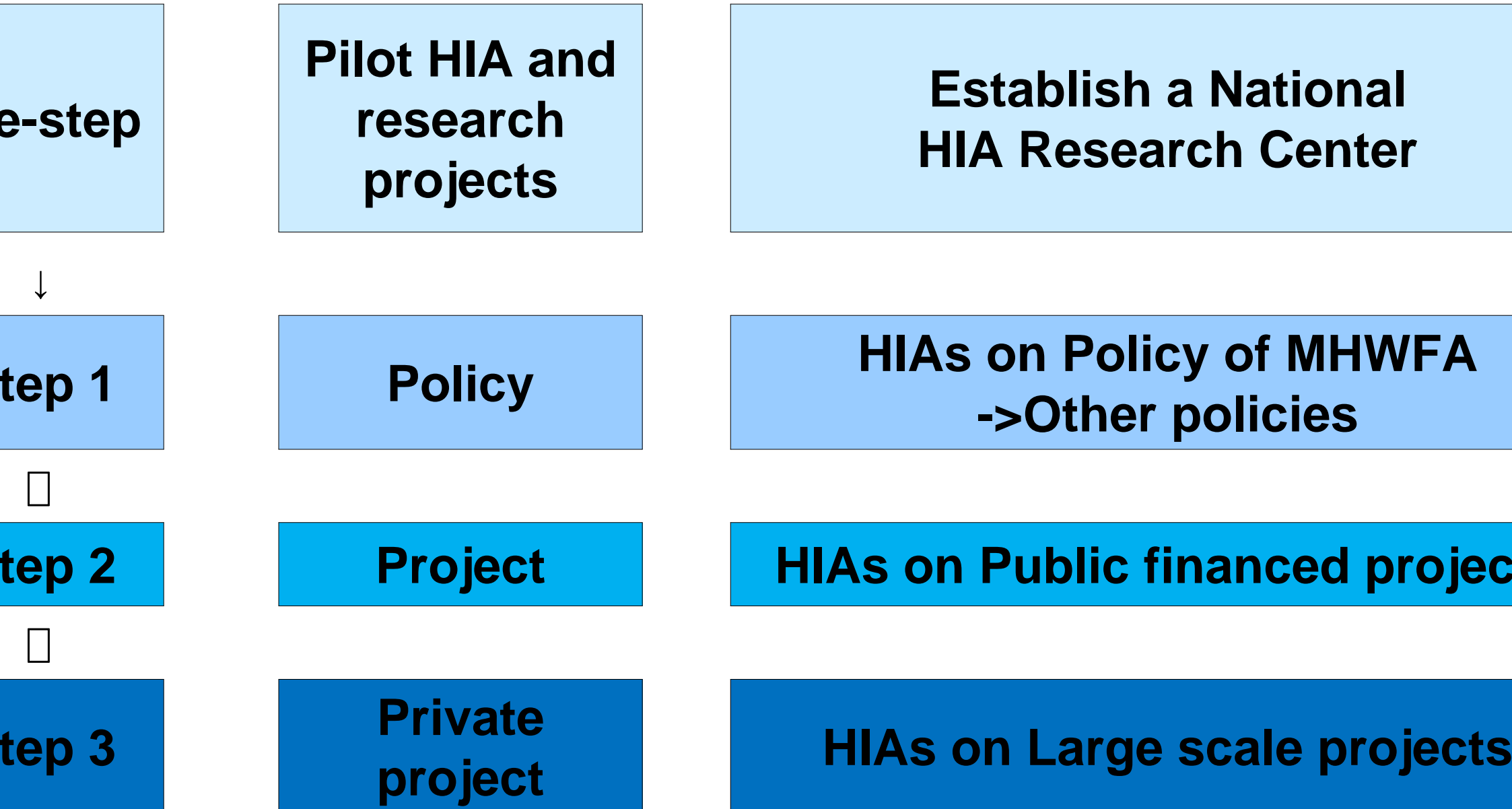
2002	Legal Basis : Framework Act on Women's Development
2004	10 Policies (Pilot Assessments)
2005	85 Policies (55 Public Institutions – National(39) and Regional(16))
2006	314 Policies (187 Public Institutions including Municipal Governments)
2007	676 Policies (271 Public Institutions)

Types of Assessments

Self-assessment : Public Institutions

In-depth assessment : Ministry of Gender Equality

Proposed Steps in Institutionalizing HIA in Korea



Recent Developments

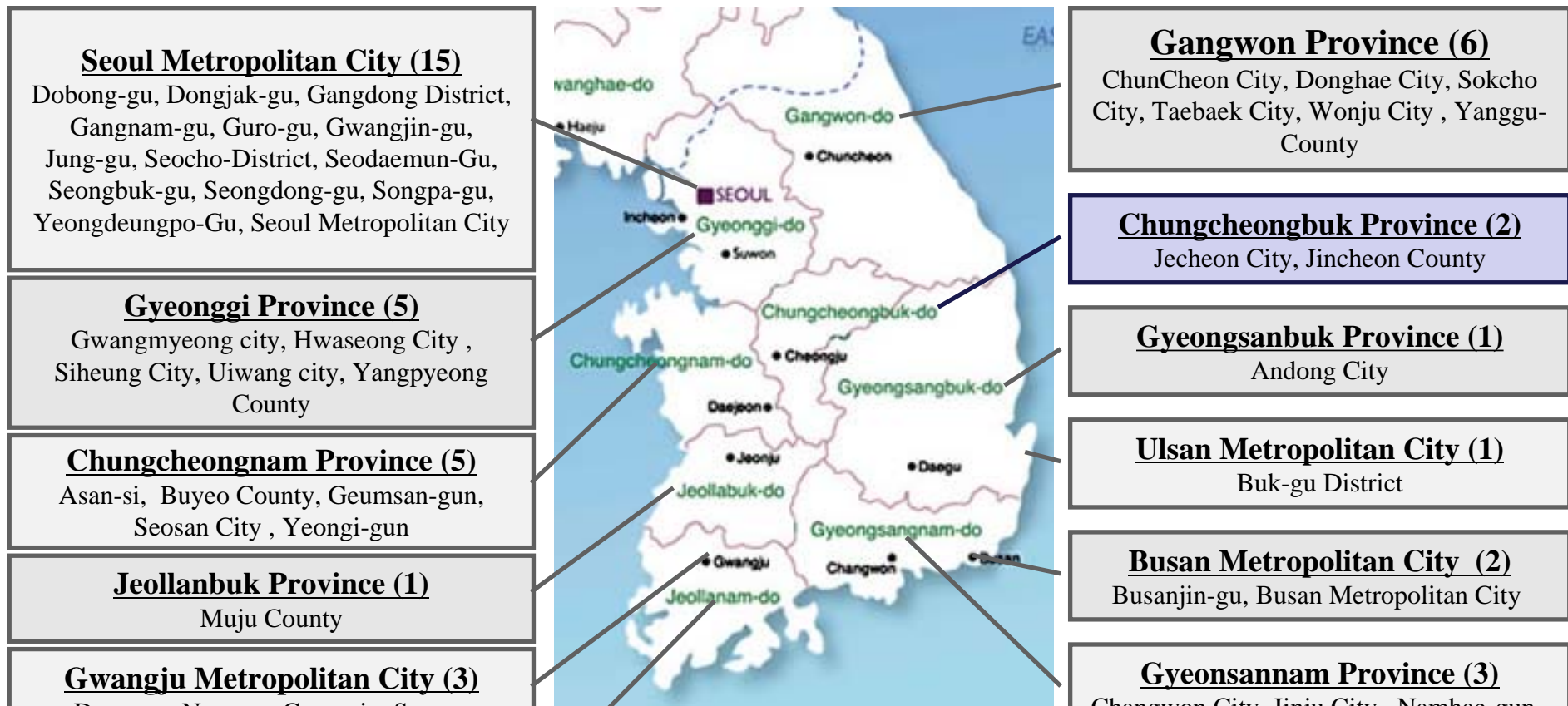
Pilot Health Impact Assessments (KIHASA, 2008)

1. HIA on Dream Start Project : Welfare project to provide healthcare, child support, and education to expected mothers, children of low-income families
2. HIA on Expansion of KTX (high speed train) Line
3. HIA on Chronic Disease Management Program at the National Sorokdo Hospital
4. HIA on Climate Change and its Burden on Infectious Disease

Opportunity : HIA in Healthy Cities (Municipal Public Policies)

A healthy city is one that is continually creating and improving the physical and social environments and expanding the community resources that enable people to mutually support each other in performing all the functions of life and in developing their maximum potential.

9 Korean Members in the Alliance for Healthy Cities (120 members in total)



Thank you very much for your attention

Jinhee Kim, MPH
Seoul National University
Gangnam Healthy City
jeeny98@gmail.com